

Associate of Applied Science Program of Study

Students must earn a minimum grade of “C” in CISM 2201 as a prerequisite to enter the program.

Courses Hours

Technology Courses

| | |
|---|---|
| CISM 2201–Fundamentals of Computer Applications | 3 |
| COPR 2250–Computer Systems Support I | 3 |
| COPR 2251–Computer Systems Support II | 3 |
| COPR 2244–Introduction to Networking | 4 |
| COPR 2245–Networking I | 5 |
| COPR 2246–Networking II | 5 |
| COPR 2301–Networking III | 5 |
| COPR 2302–Networking IV | 5 |
| COPR 2303–Networking V | 5 |
| COPR 2304–Networking VI | 5 |
| COPR 2291–Fundamentals of UNIX | 3 |
| CSCI 1301–Computer Science I | 3 |

Core Courses

| | |
|---|-----|
| ENGL 1101–English Composition I | 3 |
| MATH 1111–College Algebra | 3 |
| BUSA 2105–Communicating in the Business Env | 3 |
| COMM 1110–Public Speaking | 3 |
| POLS 1101–American Government | 3 |
| HIST 2111–US History through 1877 or HIST 2112–US History After 1877 | 3 |
| PHED (Physical Education Requirements) | 1-2 |

Total 68-69

HOPE Program

HOPE provides free tuition, required fees, and a book allowance for HOPE-eligible students in certificate programs, regardless of age, family income, or grade point average. Students must be Georgia residents, and they must complete the HOPE application.

Advanced Placement

A computer placement examination is given periodically to all individuals interested in being admitted to the program. Check the Web site for more detailed information.

About Darton College

Darton College is a two-year college of the University System of Georgia, offering Associate of Arts, Associate of Science, Associate of Applied Science degrees, and one-year certificate programs. It is located on a 180-acre campus in Albany, the hub of Southwest Georgia. A strong tradition of academic excellence prepares graduates to enter the workforce or transfer to a four-year institution.

To help students reach their academic goal, Darton offers a network of support services, including career counseling, extensive library holdings, Learning Support labs, Honors Program, computer labs, and financial assistance.

Financial Aid

Many forms of financial aid are available to qualified applicants, including grants, scholarships, Federal Pell Grant, Federal Supplemental Education Opportunity Grant, HOPE, the Georgia Student Incentive Grant, and Institutional Scholarships. A complete list is available in the College Catalog.

Call toll-free: **1-866-775-1214** or
Admissions
 (229) 317-6740
Financial Aid
 (229) 317-6746
Business Division
 (229) 317-6800

www.darton.edu

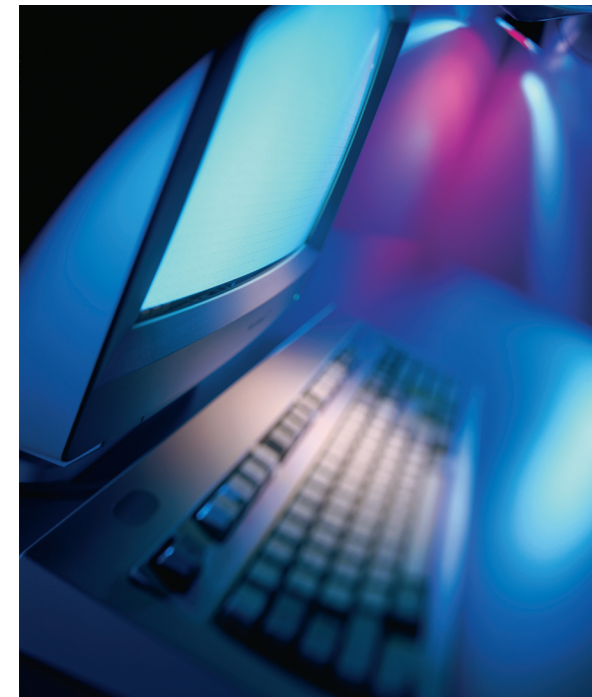
DARTON
COLLEGE

2400 Gillionville Road
Albany, Georgia 31707

University System of Georgia
An Affirmative Action/Equal Opportunity Institution

Network Support Specialist

Certification and Two-Year Degree Program



DARTON
COLLEGE

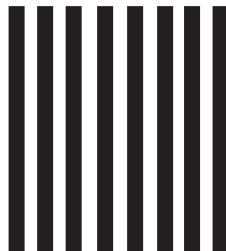
BUSINESS REPLY MAIL
FIRST CLASS PERMIT NO. 420 ALBANY, GA

POSTAGE PAID BY ADDRESSEE

DARTON
COLLEGE
ADMISSIONS/BUSINESS DIVISION
2400 GILLIONVILLE ROAD
ALBANY, GEORGIA 31707-9986



NO POSTAGE
NECESSARY
IF MAILED
IN THE
UNITED STATES



Network Support

Darton College offers two programs for Network Support: A one-year Network Support Specialist Certificate option and two-year Associate of Applied Science–Network Support Specialist option. Both programs of study are designed to prepare students to become entry-level administrators and technicians with a skill set to install, configure, support, maintain and troubleshoot a diverse network infrastructure with a focus on the various Microsoft Windows operating systems ranging from a small business to an enterprise-class environment.

The Network Support Specialist program is a comprehensive program that provides students with instructor-led training, hands-on labs, and comprehensive preparation for industry standard certifications.

Upon completion of the program, Darton students will be prepared and may elect to take the certification exams to complete the following certifications:

- CompTIA A+
- CompTIA Network+
- Microsoft Certified Professional (MCP)
- Microsoft Certified Systems Engineer (MCSE)

Network Support Specialist Certificate Option

The six networking courses provide the student with a comprehensive understanding of the various Microsoft Windows operating systems, with the goal of completing the MCSE curriculum. The two computer system support classes provide the basic knowledge and skills to become an entry-level computer technician, while the introduction to networking course provides students the basic knowledge to become an entry-level LAN/WAN technician.



Certificate Requirements

| Courses | Hours |
|-----------------------------------|-----------|
| COPR 2250 Computer Sys Support I | 3 |
| COPR 2251 Computer Sys Support II | 3 |
| COPR 2244 Intro to Networking | 4 |
| COPR 2245 Networking I | 5 |
| COPR 2246 Networking II | 5 |
| COPR 2301 Networking III | 5 |
| COPR 2302 Networking IV | 5 |
| COPR 2303 Networking V | 5 |
| COPR 2304 Networking VI | 5 |
| Total | 40 |

Network Support Specialist AAS Option

Students who complete this certificate may elect to take the necessary courses to earn an Associate of Applied Science degree in the Network Support Specialist option. The requirements for the two-year associate degree program are listed on the back of this brochure.

Microsoft Certification Employment Outlook

Microsoft certification may lead to jobs with entry-level salaries ranging from \$25,000 to \$35,000 annually.

Authorized Testing Center

Darton College is an authorized Pearson VUE testing center for various computer certification examinations. Visit www.vue.com for more information and to register for an exam.

Network Support Engineer Option

Darton students may elect to complete Elements of the Cisco Support Specialist option, along with the core curriculum, to complete an AAS Network Support Engineer degree. The intent of this program is to provide students with a vehicle to complete both Cisco and Microsoft certification, the two more predominant IT certifications available today.



I am interested in attending Darton College. Please send me an application and additional information.

DARTON
COLLEGE

E-mail Address: _____

Name: _____

Address: _____

City: _____ State: _____ Zip: _____

Telephone Number: (home) _____ (work) _____

Name of High School: _____ Date of Graduation: _____

College(s) Attended: _____

Intended Major(s): _____

Areas of Interest: _____